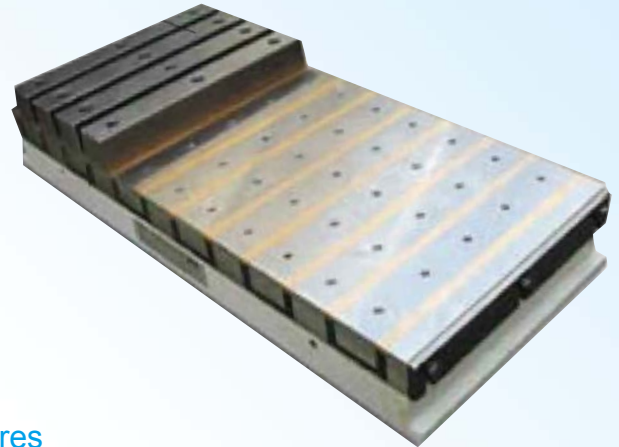




Ningbo Realpower Magnetic Industry Co.,Ltd.

EP-CHLUK EPL SERIES

Large Pole Electro-Permanent Magnetic Chuck



Description

EPL series Large Pole Electro-Permanent Magnetic Chuck

No heat build up or deformation provides high precision accuracy

No electricity required to keep the Electro Permanent Magnetic Chuck ON.

All Metal Top Plate of Brass and Steel lamination provides full active magnetic area.

Variable power makes it possible to adjust the magnetic force.

Large transverse pole arrangement, suitable for milling work .

Use:

For heavy milling of large and thick workpieces. For large air gaps.

- min. thickness of workpiece: 35 mm
- min. size of workpiece: 150 x 150 mm²
- nominal holding force: 170 N/cm²

Application

- For grinding application of all sizes of jobs.
- Electro Permanent Magnetic Chucks are suitable for horizontal spindle surface grinding machines as the main cutting thrust is towards the length of the chuck, poles at right angle of the wheel give more gripping of the job.

Specifications

Model	Dimensions in mm					Optional number of threads per pole (M)	Number of poles (M)	Number of threads	Weight in kg
	A	B	C	D	P				
EPL2040	410	200	80	100	27.5	2	15	30	46.0
EPL2050	520	200	80	100	27.5	2	19	38	58.0
EPL2060	630	200	80	100	27.5	2	23	46	71.0
EPL3050	520	300	80	100	27.5	3	19	57	87.0
EPL3060	630	300	80	100	27.5	3	23	69	107.0
EPL3080	800	300	80	100	27.5	3	29	87	135.0
EPL4060	630	400	80	150	27.5	3	23	69	143.0
EPL4080	800	400	80	150	27.5	3	29	87	180.0
EPL40100	1015	400	80	150	27.5	3	37	111	228.0
EPL3040	480	300	97	60	55	4	9	36	94.0
EPL3050	590	300	97	60	55	4	11	44	116.0
EPL3080	810	300	97	60	55	4	15	60	159.0
EPL30100	1030	300	97	60	55	4	19	76	202.0
EPL30110	1140	300	97	60	55	4	23	92	224.0
EPL4080	810	400	97	80	55	5	15	75	212.0
EPL40100	1030	400	97	80	55	5	19	95	270.0
EPL40110	1140	400	97	80	55	5	23	115	299.0
EPL40150	1580	400	97	80	55	5	29	145	414.0

Other size on request .

Features

- optimized high energy magnetic system concentration to the workpiece
- total chuck surface active, no "dead" zones
- solid mono-block construction
- real magnetic (N/S) poles
- electro-permanent system, guaranteeing safe operation during power failure
- pole separation with brass for optimal wear behaviour
- pole plate wearing limit 8 mm
- tapped holes grid for fixed or flexible pole raisers on request (M)
- T-slots possible on pole pitch P=85 mm according DIN 650-10H10 (T) and on request
- mounting slots in both short faces
- through holes for mounting in sizes over 1000 mm length on specification
- robust and waterproof

