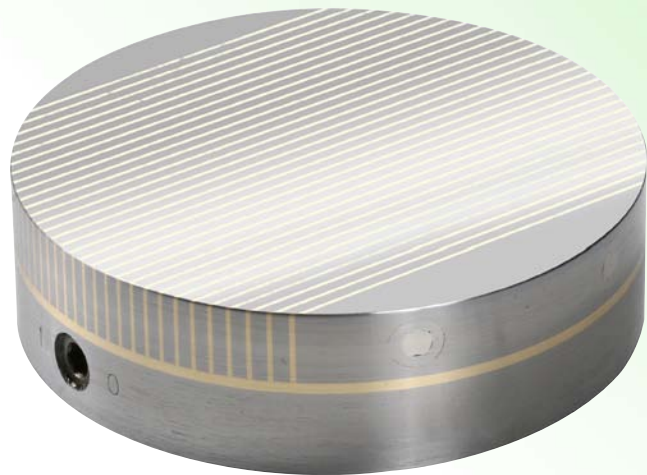




Ningbo Realpower Magnetic Industry Co.,Ltd.

RMC SERIES

Micro Pole Round Permanent Magnetic Chuck



With fine parallel pole pitch $P = 0.5\text{mm} + 1.5\text{mm}$ Pole pitch: steel 1.5 mm, brass 0.5 mm

Use:

Clamping of small and thin to medium-sized workpieces.

Features:

Extremely low height due to use of neodymium-iron-boron magnets.

Pole pitch $P = 2\text{mm}$.

Nominal holding force: 80 N/cm²

Magnetic field height: 8 mm

Pole plate wearing limit: 5 mm

We can also design and produce as client's requirements

Specifications

Model	Dimensions(mm)							Weight in kg
	A	B+0.5 -2	C	D	E	F	G	
RMC100	100	43	65	2	85	3 x M8	14	2.00
RMC130	130	43	100	2	115	3 x M8	14	4.50
RMC160	160	43	125	2	140	4 x M8	14	6.50
RMC200	200	43	160	2	180	4 x M8	14	10.0
RMC250	250	43	200	2	224	4 x M10	14	15.0
RMC300	300	45	230	3	260	4 x M10	14	25.0
RMC320	320	45	230	3	260	4 x M10	14	32.0
RMC350	350	56	300	4	330	4 x M10	16	43.0
RMC400	400	56	300	4	350	6 x M10	16	52.0

other size on request

