



# Ningbo Realpower Magnetic Industry Co.,Ltd.

## RMM SERIES

Suitable For Milling (RMM)

**Use:**

For workpieces that are difficult to clamp.

**Features:**

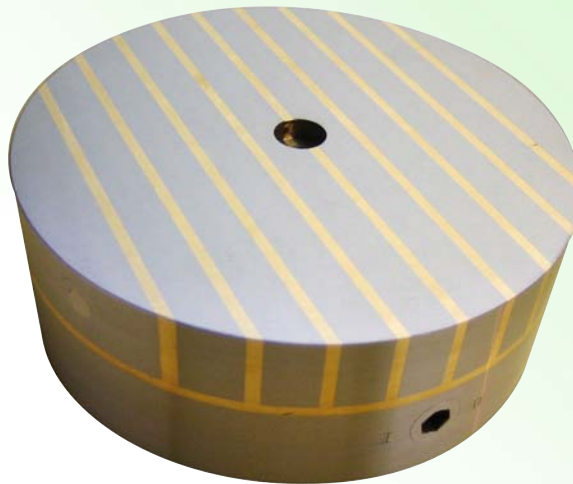
Extremely high holding force combined with slim construction.

Laminations 12mm steel / 3 mm brass

Nominal holding force: 120 N/cm<sup>2</sup>

Magnetic field height: 10 mm

Top plate wearing limit: 5 mm



We can also design and produce as client's requirements

## Specifications

Model	Dimensions(mm)								pole pitch steel/brass	swtweening positions	Weight in kg
	A	B	C	D	E	F	G				
RMM100	100	62	70	2.5	8	91	3XM5	12+3	1	3.0	
RMM130	130	62	90	2.5	10	120	4XM6	12+3	1	5.0	
RMM160	160	75	125	3.0	15	142	4XM8	12+3	1	8.0	
RMM200	200	80	150	4.5	22	182	4XM8	12+3	1	13.0	
RMM250	250	80	200	4.5	22	232	4XM8	12+3	1	20.0	
RMM300	300	85	250	4.5	22	285	4XM8	12+3	1	29.0	
RMM350	350	85	300	4.5	22	334	4XM8	12+3	1	40.0	
RMM400	400	100	300	5.0	22	350	6XM10	12+3	1	59.0	
RMM450	450	100	350	5.0	22	400	6XM10	12+3	2	70.0	
RMM500	500	100	400	5.0	22	450	6XM10	12+3	2	90.0	

other size on request

